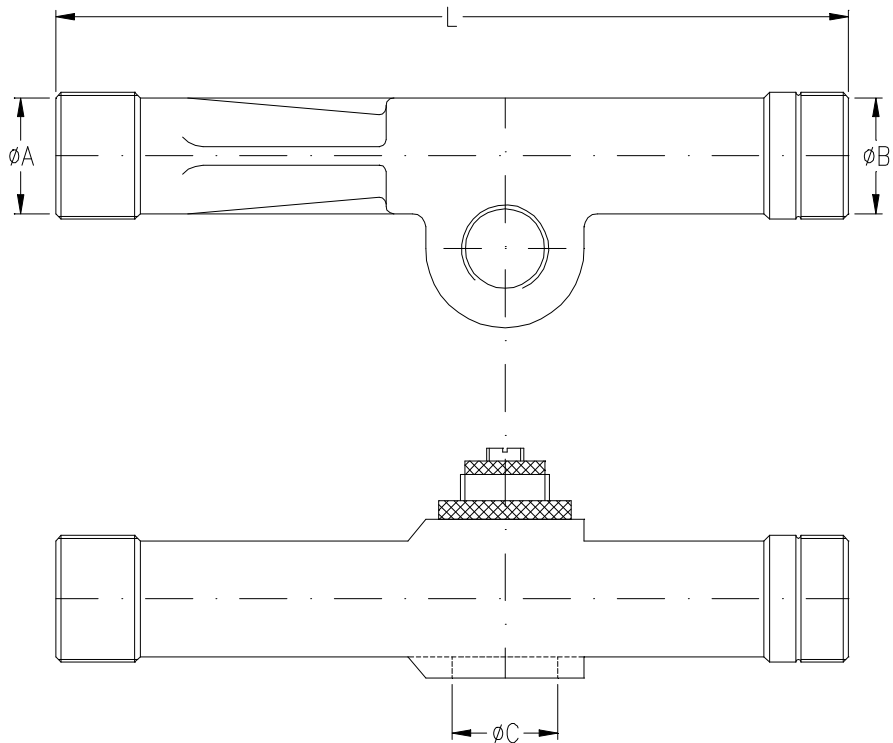


**TUBI DI VENTURI - VENTURI TUBES**  
**Per impianti di combustione canali**  
**For forehearths combustion systems**



VENTURI TIPO	$\varnothing A$	$\varnothing B$	$\varnothing C$	L	INSERTO TIPO
23	1"1/2	1"	1"	300	13,14,15,16,17,18
24	2"	1"1/2	1"1/2	340	20,22,24,26
25	2"1/2	2"	2"	380	28,30,32,35
26	3"	2"1/2	2"1/2	450	38

**MT Forni Industriali** dispone normalmente a magazzino di tutte le dimensioni sopra indicate

All sizes as per table are normally available